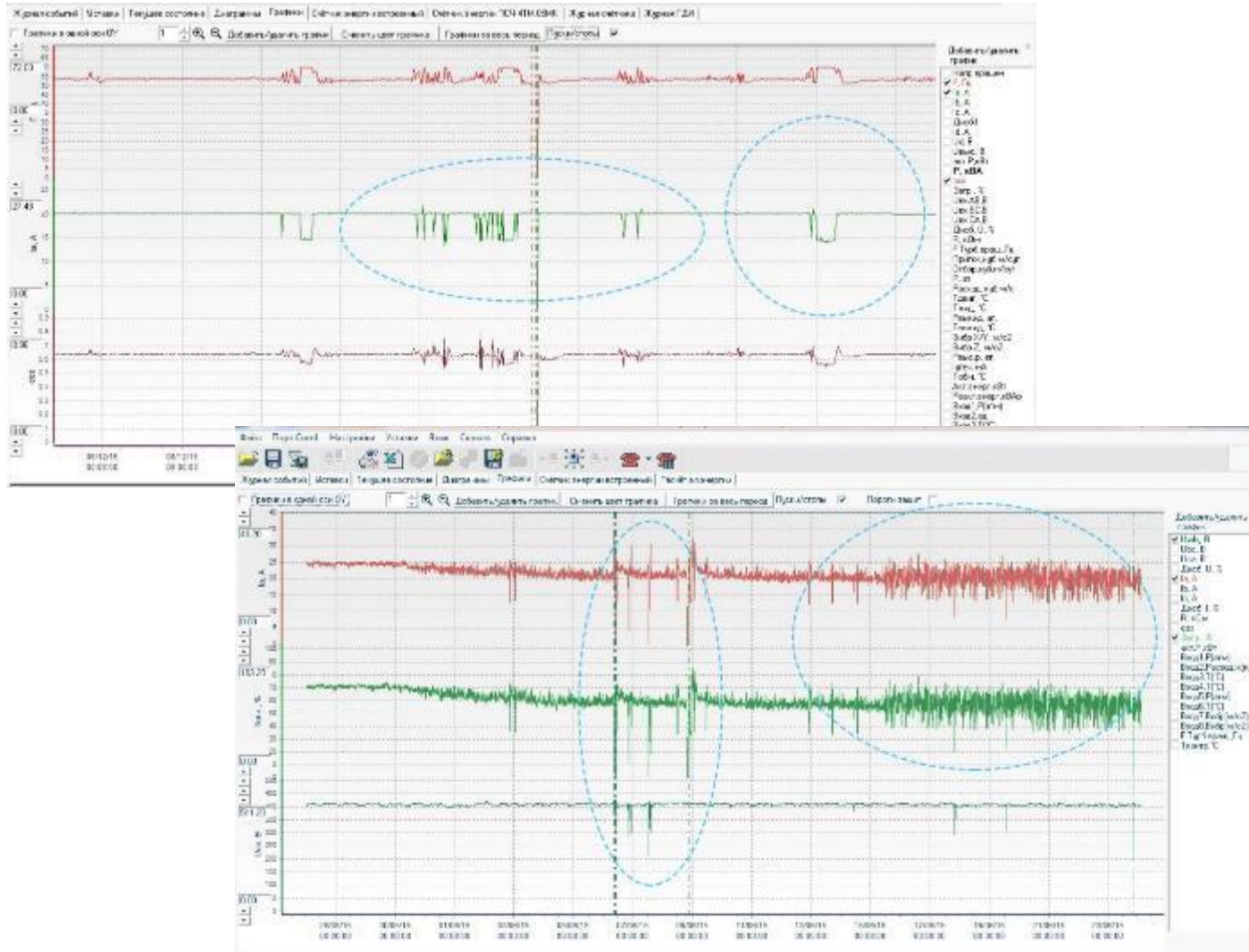


ESP Monitoring & Management

- Detection of abnormal behavior of equipment. Breakdown prediction using machine learning algorithm by analyzing SCADA real-time data.
- Forecasting of Mean Time Between Failures: allows to plan and run preventive actions to reduce oil production losses
- Integration with SCADA system
 - Real time data analytics visualization
 - Immediate alerts on complications or risk of potential incidents.
- Filed data required:
 - Real-time data provided by SCADA system
 - Well operation data: liquid flow rate, dynamic level, water cut, etc.

ESP Monitoring & Management



COST SAVINGS

Increase in the Mean Time Between Failures by 15-20% based on assumption of every second prevented complication case. Reduction of number of emergency well shutdowns

EFFICIENCY

Proprietary signature based classifier with improved accuracy of event detections

SAFETY

Immediate alerts on complications or risk of potential incidents